



**HEALTH EQUITY THROUGH  
PARTNERSHIPS WITH COMMUNITY  
DEVELOPMENT ORGANIZATIONS:  
THE OTHER CDC  
DECEMBER 3, 2020**

Welcome! We will get started momentarily



Build Healthy  
Places Network

# Examples from the Field





A community hub that includes health and dental services, behavioral care, and 24 units of affordable senior housing.



CommonBond  
COMMUNITIES

CommonBond Communities, Minneapolis,  
Minnesota.



Member driven.  
Community focused.



Magnolia Crossing in Yazoo City,  
Mississippi, \$8.5 million to renovate 86  
public housing units.



THE  
**Delores  
Project**



**ROCKY MOUNTAIN  
Communities**  
Building Brighter Futures at Home



Arroyo Village, Denver, Colorado

# Place-based Initiatives





# Principles for Building Healthy and Prosperous Communities



Principle 1:

**Collaborate with the community**



Principle 2:

**Embed equity**



Principle 3:

**Mobilize across sectors**



Principle 4:

**Increase prosperity to improve health**



Principle 5:

**Commit over the long term**



# Place-based Initiatives

- We advance community-based solutions through cross-sector partnerships in historically marginalized, disinvested low-income communities that are disproportionately Black, Indigenous, and People of Color.
- We partner with community development, health, local government, and advocacy organizations to catalyze neighborhood revitalization efforts.





## BHPN Menu of Services

### Landscape/Market Analysis

- Analysis tailored to identify potential health and/or community partners, initiatives, priorities, pain points, and investment history.

### Case-Making

- We produce pitch decks and custom “leave behind” resources that speak to a specific potential partner’s investment priorities, history, helping to secure new funding for local projects as well as advocacy support for comprehensive community development.

### Brokering Connections

- We help foster and manage meaningful connections between community development and healthcare organization that are mission-aligned.

### Training



- We train community development teams on effective health engagement strategies and racial equity approaches - and healthcare teams on the utility and best use of community development, its resources, expertise and investments including risk/return profiles.



# Landscape Analysis for: Coachella Valley, San Bernardino, Santa Rosa & Stockton

## Coachella Valley, California

### Landscape Analysis

March 14, 2019

### SOME ISSUES HIGHLIGHTED IN OUR CONVERSATIONS

#### HOSPITALS

- Have a major goal to reduce the use of high frequency users and reduce the exorbitant cost of emergency readmissions.
- Coachella Valley has a critical shortage of primary care and behavioral health providers. Among the challenges are the cost of educating physicians, specialists, and allied health care technicians, and retaining them to serve the area.
- Struggling to comply with SB 1152, but growing demand and limited capacity present immense challenges for providers. The bill requires hospitals to have a written plan for coordinating services and referrals for homeless patients and post-discharge destinations of each homeless patient.

#### MEDI-CAL PROVIDER

Homeless patients are often too sick or frail to return to the street, but external support services and shelter are inadequate.

#### VARIOUS STAKEHOLDERS

- Lack of affordable housing for low-income population and housing stock.
- Undocumented immigrants fearful of accessing healthcare.
- Public distrust of government and healthcare providers.

19 Build Healthy Places Network

### Coachella Opportunities for Health At-a-Glance – LISC and CVHC

Opportunity	Possible Step
Convening with healthcare partners	<ul style="list-style-type: none"> <li>• Make the case for partnership on housing and investment and hear about partner pain points and priorities to shape a collaborative project.</li> </ul>
Desert Care Network	<ul style="list-style-type: none"> <li>• Discuss effort to reduce homelessness to partner with CVHC on supportive services, co-location or investment in housing.</li> <li>• Discuss partnerships with FOHCs to assess strategies to connect health and social services to CVHC housing residents.</li> </ul>
Inland Empire Health Plan	<ul style="list-style-type: none"> <li>• Partner with CVHC to help facilitate health and supportive services, data sharing or investment in housing projects.</li> <li>• Create a co-investment fund. LISC could guide structure and funds.</li> </ul>
Loma Linda University Health	<ul style="list-style-type: none"> <li>• Loma Linda could complete a health needs assessment for CVHC housing residents and train local residents to lead project.</li> <li>• Partner w/ facility in Indio to support residents' health &amp; social needs.</li> <li>• Gauge Loma Linda's interest in providing investment support on one of CVHC's housing projects in East Coachella Valley.</li> </ul>
Clinicas de Salud del Pueblo	<ul style="list-style-type: none"> <li>• Partner on health promotion and prevention through transportation services, Medi-Cal enrollment or telehealth.</li> <li>• Assess interest in co-location with a affordable housing project.</li> </ul>
Desert Healthcare District and Foundation	<ul style="list-style-type: none"> <li>• Discuss effort to reduce homelessness to partner with CVHC on supportive services or investment in housing projects.</li> <li>• Discuss foundation priorities to assess a funding partnership.</li> </ul>
Riverside University Health System	<ul style="list-style-type: none"> <li>• Assess community clinic expansion to co-locate with a CVHC housing project or partner to provide services to residents on site.</li> </ul>

### ECONOMY & HOUSING





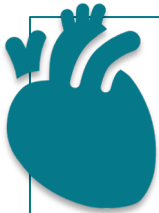
# Principles for Utah Housing Preservation Fund



**Provide access to safe and healthy affordable housing for all Utahans** by supporting the preservation of a range of housing options for individuals and families with incomes below 80% average median income.



**Build trust with communities where the Fund is investing** and prioritize affordable housing preservation opportunities identified by those communities.



**Improve opportunities for health and wellbeing for people in low-income and communities of color** across the state, including rural, suburban, resort, and urban areas that face systemic disinvestment and disproportionate negative health outcomes.



**Provide rapid, patient capital accessible to key stakeholders across the state** to preserve Utah's affordable housing.



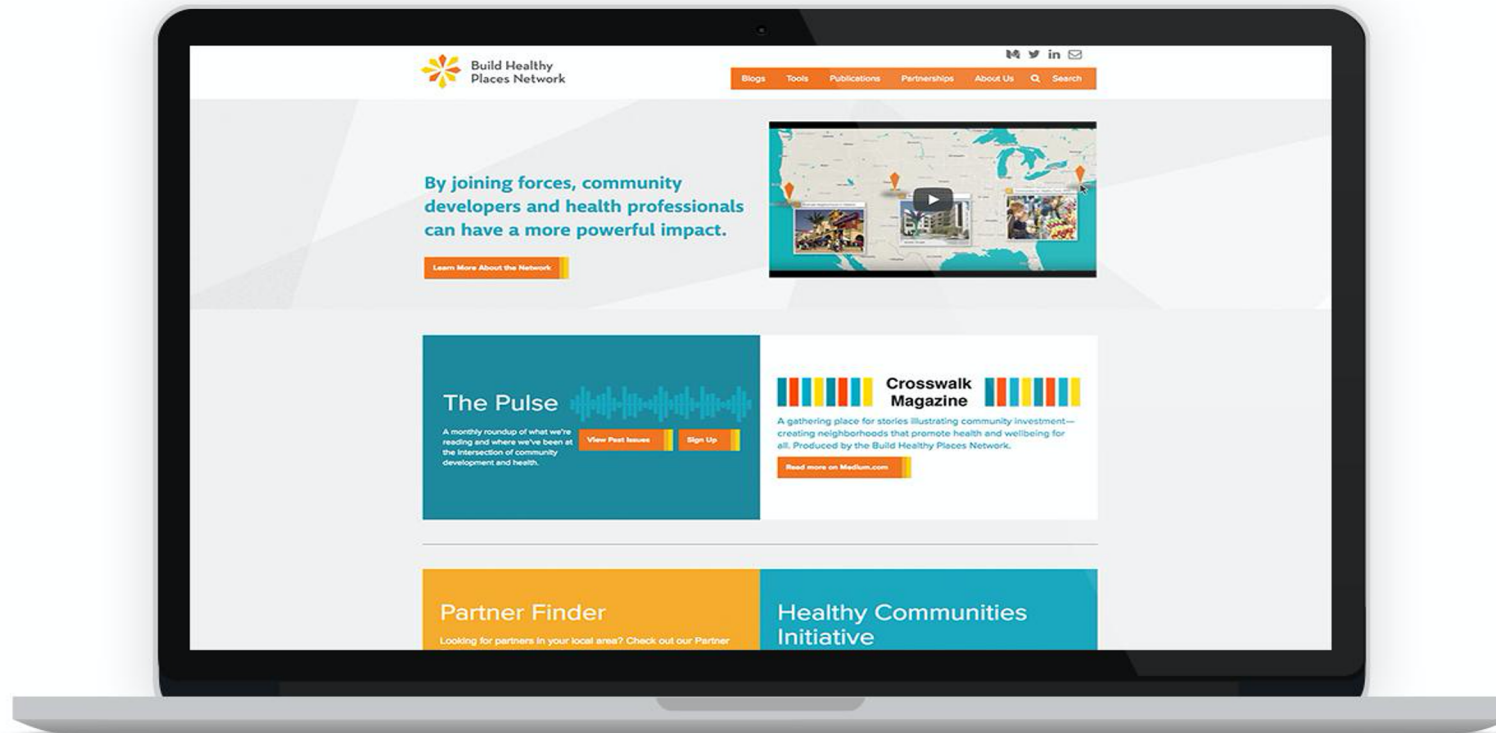
**Leverage public and private resources and existing community assets** in coordination with other statewide initiatives and national expertise across sectors.



**Secure long-term commitments** from funders and investors with short, medium, and long-term health objectives that are tracked and measured.



# Resources for Next Steps



[www.BuildHealthyPlaces.org](http://www.BuildHealthyPlaces.org)

 [@BHPNetwork](https://twitter.com/BHPNetwork)



# Jargon Buster

Working across sectors begins with speaking the same language. If you're lost in a sea of acronyms, this tool can help. Below we aim to demystify common industry jargon.

[Accountable Care Organization \(ACO\)](#)



[Affordable Care Act \(ACA\)](#)



[CDC \(Centers for Disease Control and Prevention\)](#)



[CDC \(Community Development Corporation\)](#)



[Community Benefits \(Agreements\)](#)



[Community Benefits \(Hospital\)](#)



[Community Development](#)

[Community Development Financial Institutions \(CDFIs\)](#)

[Community Health Assessment \(CHA\)](#)

[Community Reinvestment Act](#)

[Equitable Development](#)

## Community Development

**Related Terms:** [CDC \(Community Development Corporation\)](#), [Community Development Financial Institutions \(CDFIs\)](#), [Social Determinants of Health](#), [Health Equity](#)

Community development is a multi-billion-dollar sector of the American economy that invests in low- and moderate-income communities through the development and financing of affordable housing, businesses, community centers, health clinics, job training programs, and services to support children, youth, and families. The sector has its roots in the urban revitalization efforts of the late 19th century but expanded as a result of the War on Poverty programs of the 1960s. Today, the community development sector invests more than \$200 billion annually in low-income communities.



## Crosswalk



**Defining the 'New Normal' and Creating an Equitable Recovery after COVID-19**



**Healthcare Systems Back Grocery Stores in Food Deserts**



**Combating Social Isolation Requires a True System of Care**



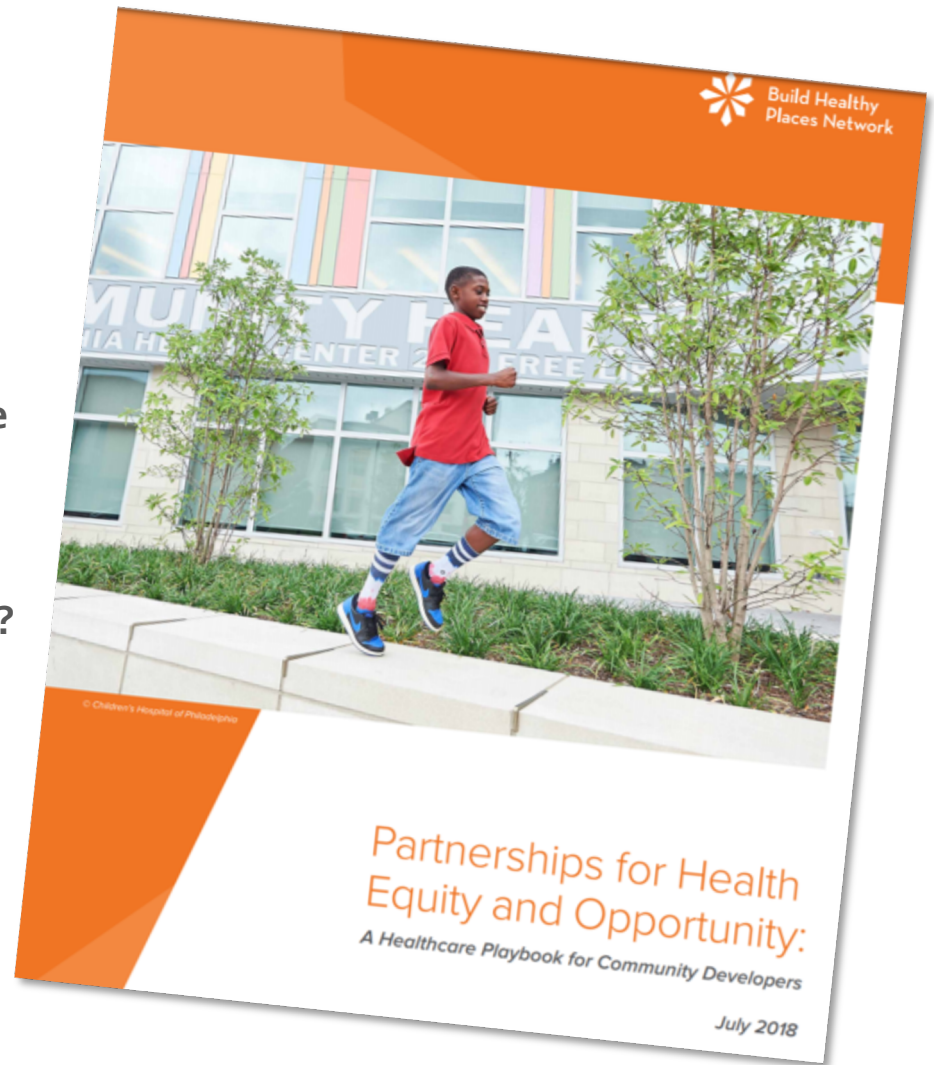
**Rebuilding Healthy Communities in Rural America**



# THE PLAYBOOK

- Who are the players, and what are their motivations and offerings?
- What evidence makes the strongest case for community development and health partnerships?
- What do partnerships currently look like?
- How do partnerships develop?
- What are the barriers to partnership?

[www.build.health/Playbook](http://www.build.health/Playbook)





# Welcome to Partner Finder

Welcome to Partner Finder, a collection of directories to help you find the community development and health organizations nearest to you. Partner Finder helps you take the first steps to identify potential cross-sector partners in improving the health and well being of your community.



**NOSORH**  
National Organization of  
State Offices of Rural Health



**n.ceda**  
*building prosperous communities together*



National Network  
of Public Health Institutes



**NeighborWorks®**  
**AMERICA**



**OPPORTUNITYFINANCE**  
NETWORK



Rural  
**LISC**  
*We believe in  
rural America*



# Factsheet Series

August 2020

Community Development  
Counteracts Isolation

May 2020

The Intersection of  
Community Development  
& Mental Health

December 2020

Preventing and Ending  
Homelessness, Community  
Development's Role



# **TAKEAWAYS: COMMUNITY DEVELOPMENT & PUBLIC HEALTH TOGETHER**

---

**LEARN** – Utilize BHPN resources to navigate Comm Dev sector

---

**IDENTIFY** – Locate CDCs and CDFIs working in high poverty areas

---

**ENGAGE** – Reach out to local/regional CDCs, CDFIs, meet, learn, invite to work on CHAs, CHNAs, join their board.

---

**ALIGN** - Consider ways to align resources and expenditures



# Build Healthy Places Network



[www.BuildHealthyPlaces.org](http://www.BuildHealthyPlaces.org)



@BHPNetwork



[www.linkedin.com/company/build-healthy-places-network](http://www.linkedin.com/company/build-healthy-places-network)



**Ruth** [rthomassquance@buildhealthyplaces.org](mailto:rthomassquance@buildhealthyplaces.org)

**Renae** [rbadruzzaman@buildhealthyplaces.org](mailto:rbadruzzaman@buildhealthyplaces.org)

**Ashley** [ahernandez@buildhealthyplaces.org](mailto:ahernandez@buildhealthyplaces.org)



# QUESTIONS

We want to hear from you!  
Share your **questions** via  
the **chat box**. We will  
answer as many as  
possible.

CONTACT  
INFORMATION

**Holly Salazar**

[hsalazar@leaders4health.org](mailto:hsalazar@leaders4health.org)

**[www.leaders4health.org](http://www.leaders4health.org)**



**Ruth Thomas-Squance**

[rthomassquance@buildhealthyplaces.org](mailto:rthomassquance@buildhealthyplaces.org)

**[www.buildhealthyplaces.org](http://www.buildhealthyplaces.org)**

