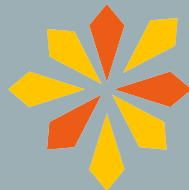




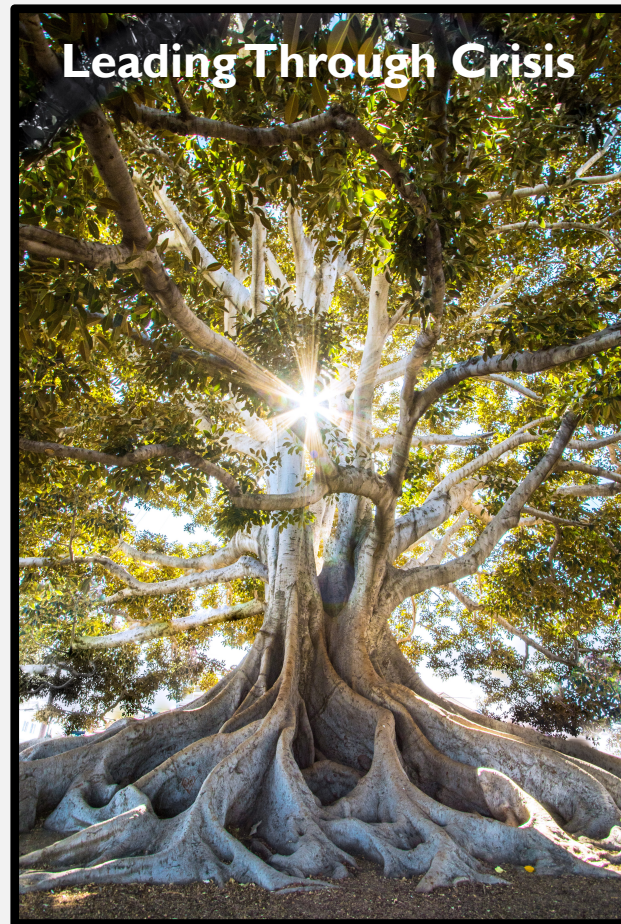
**HEALTH EQUITY THROUGH  
PARTNERSHIPS WITH COMMUNITY  
DEVELOPMENT ORGANIZATIONS:  
THE OTHER CDC  
DECEMBER 3, 2020**

Welcome! We will get started momentarily



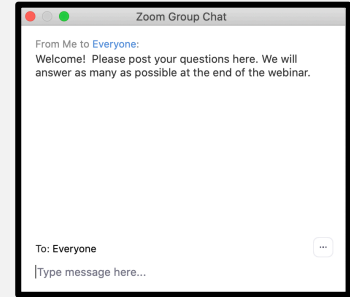
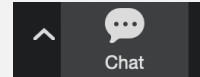
Build Healthy  
Places Network

- **Part 1**
  - Presentation (*9-9:45am PST / 12-12:45pm EST*)
- **Part 2**
  - Discussion with Panelists & Deep Dive into topics (*9:45-10:30am PST / 12:45-1:30pm EST*)



WELCOME

- We want to hear from you! Share your **questions** and **comments** via the **chat box**.



- A **recording** of today's discussion with **materials** will be made available within 24 hours. We'll send you an email once it is online.
- Please provide your feedback via our **survey!**



OUR PANELISTS

# Health Equity Through Partnerships With Community Development Corporations: The other CDC



**Build Healthy  
Places Network**

Ruth Thomas-Squance, PhD, MPH  
Rena A. Badruzzaman, MPH  
Ashley Hernandez, MSc.

*CHBL USA*  
December 3rd, 2020



## Introductions: Getting to know us

- **Ruth Thomas-Squance**, Director of Field Building
- **Renae A. Badruzzaman**, Program Manager, Place-Based Team
- **Ashley Hernandez**, Communications and Outreach Specialist

# THE BUILD HEALTHY PLACES NETWORK

“We are the national center at the intersection of **community development and health**, leading a movement to accelerate investments and speed and spread solutions for building healthy and productive communities.”



Engage



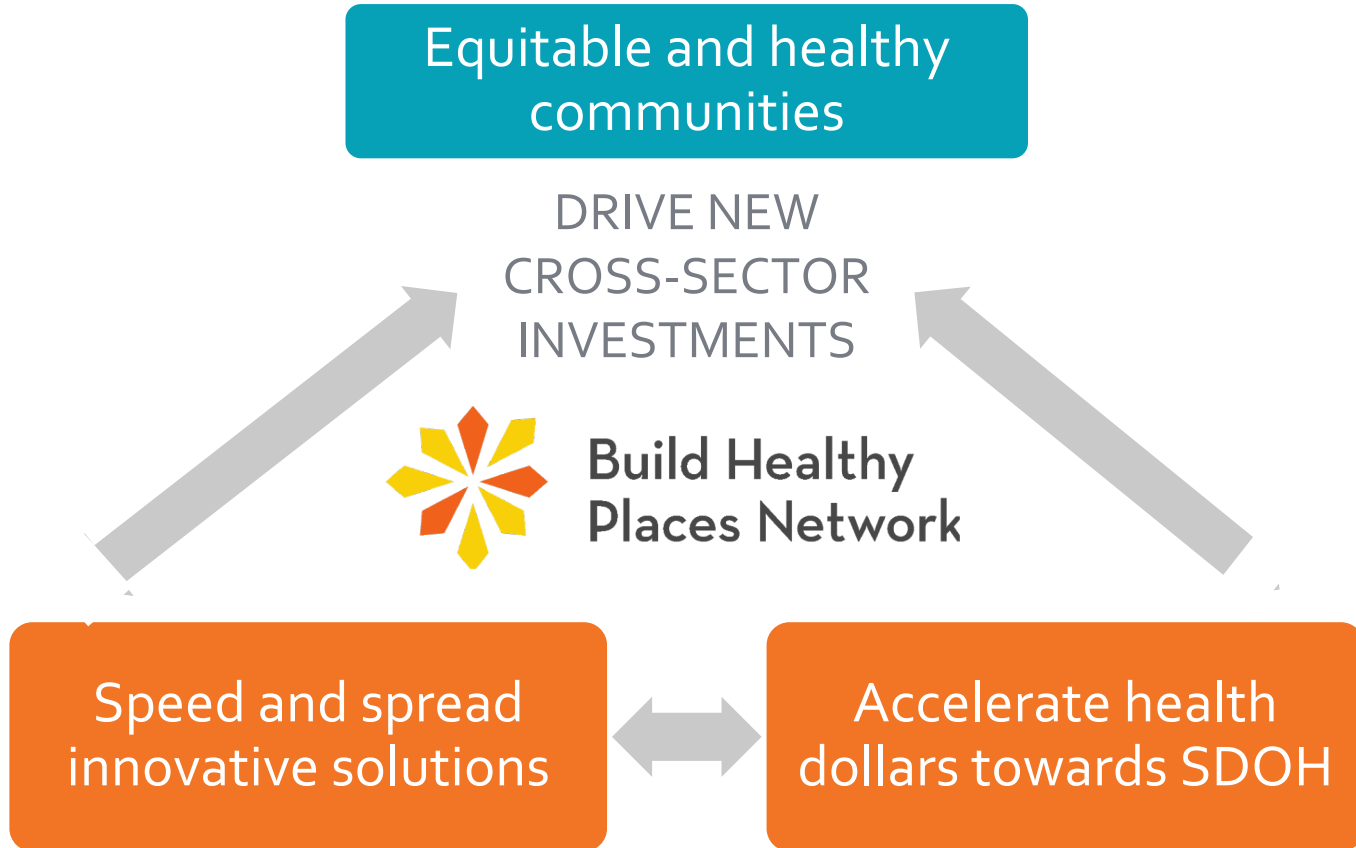
Educate



Synthesize



# Achieving Better Health through Better Partnerships

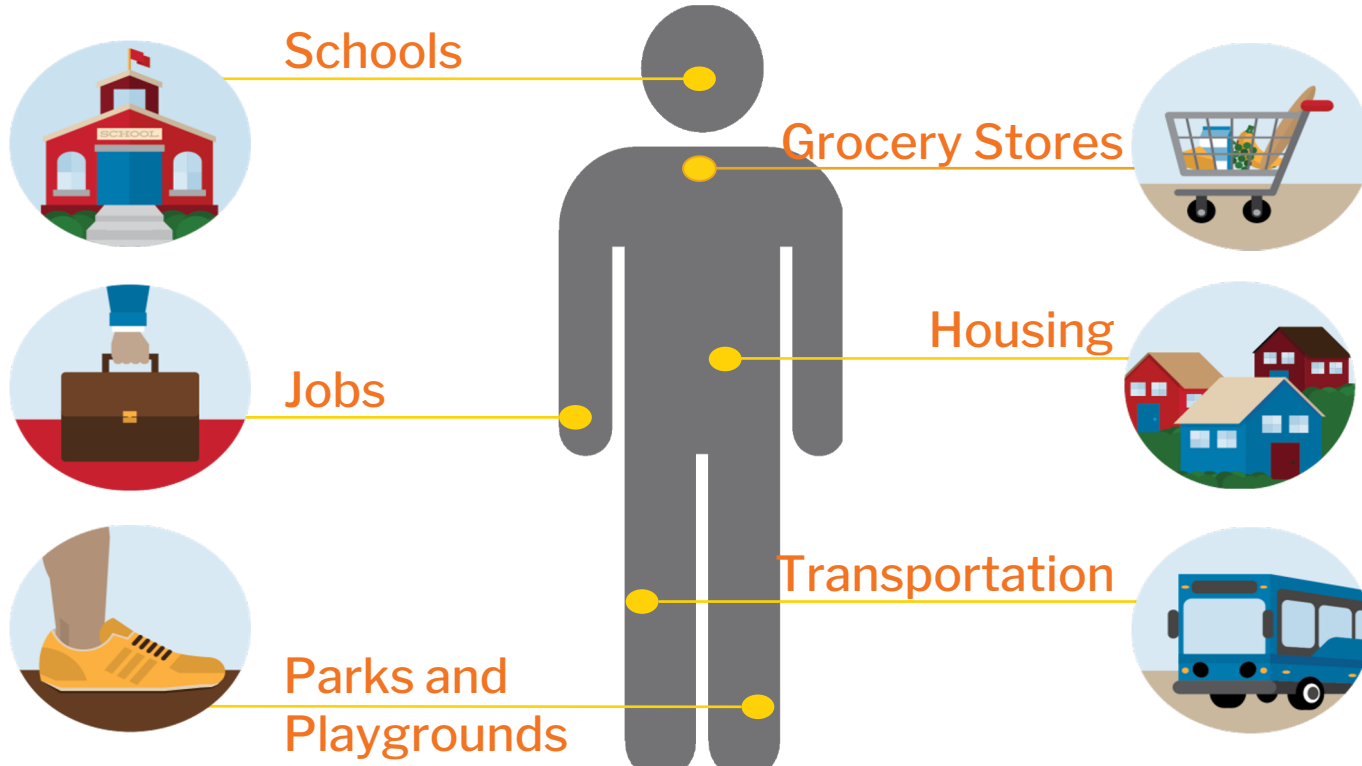




# Health Happens in Neighborhoods



# PEOPLE GET SICK BECAUSE OF THEIR SOCIAL AND PHYSICAL ENVIRONMENTS





# Housing and Health

- Poor housing quality strongest predictor of emotional and behavioral problems in low-income children and youth
- Much of the association between poor quality and unstable housing and children's well-being operates through parental stress and parenting behaviors

MacArthur Foundation

## HOW HOUSING MATTERS

[macfound.org/HousingMatters](http://macfound.org/HousingMatters)

POLICY RESEARCH BRIEF

### Poor Quality Housing Is Tied to Children's Emotional and Behavioral Problems

*Parents' stress from living in poor quality and unstable homes takes a toll on children's well-being*

by REBEKAH LEVINE COLEY, TAMA LEVENTHAL, ALICIA DOYLE LYNCH, AND MELISSA KULL

SEPTEMBER 2013

A family's home is their haven, but for families living with leaking roofs and roaches, for those who have to choose between paying for rent or for food, or for families who repeatedly move in search of higher quality or more affordable housing, one's place of refuge may not be very homey.

This brief examines how housing characteristics matter to children and families' well-being.<sup>1</sup> Among the various possibilities tested, poor housing quality was the most consistent and strongest predictor of emotional and behavioral problems in low-income children and youth. It also had a sizable association with school performance among older youth. Housing affected children because the stress of living in

#### KEY FINDINGS

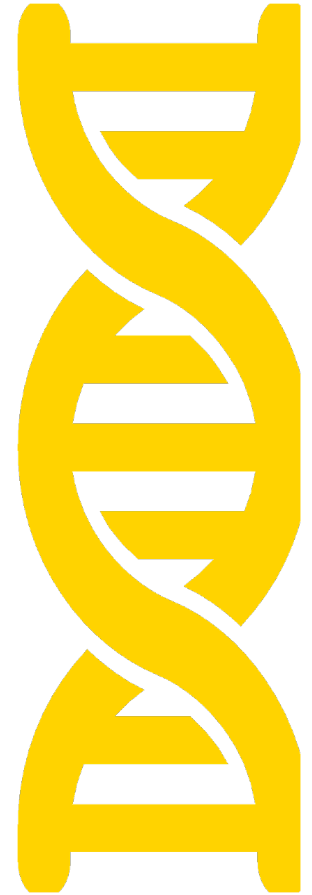
- Poor housing quality is the most consistent and strongest predictor of emotional and behavioral problems in low-income children and youth among the five housing characteristics studied (quality, stability, affordability, ownership, and receiving a housing subsidy).
- Residential instability also is important for children's well-being.
- Even though much of the sample struggled with housing costs, unaffordability has little discernible link to children's well-being.
- Much of the association between poor quality and unstable housing and children's well-being operates through parental stress and parenting behaviors.

Screenshot



IN DETERMINING YOUR HEALTH...

48314 >





# COMMUNITY DEVELOPMENT IS IN THE ZIP CODE IMPROVEMENT BUSINESS





# What is Community Development?

# COMMUNITY DEVELOPMENT IS **NOT** URBAN RENEWAL

Pruitt-Igoe, St. Louis, MO  
1956 to 1972

Architect: Minoru Yamasaki



# ZIP CODE IMPROVEMENT... COMPREHENSIVE YOUTH DEVELOPMENT



**KIPP Academy, Washington D.C.**



**Neighborhood Centers Inc., Houston**



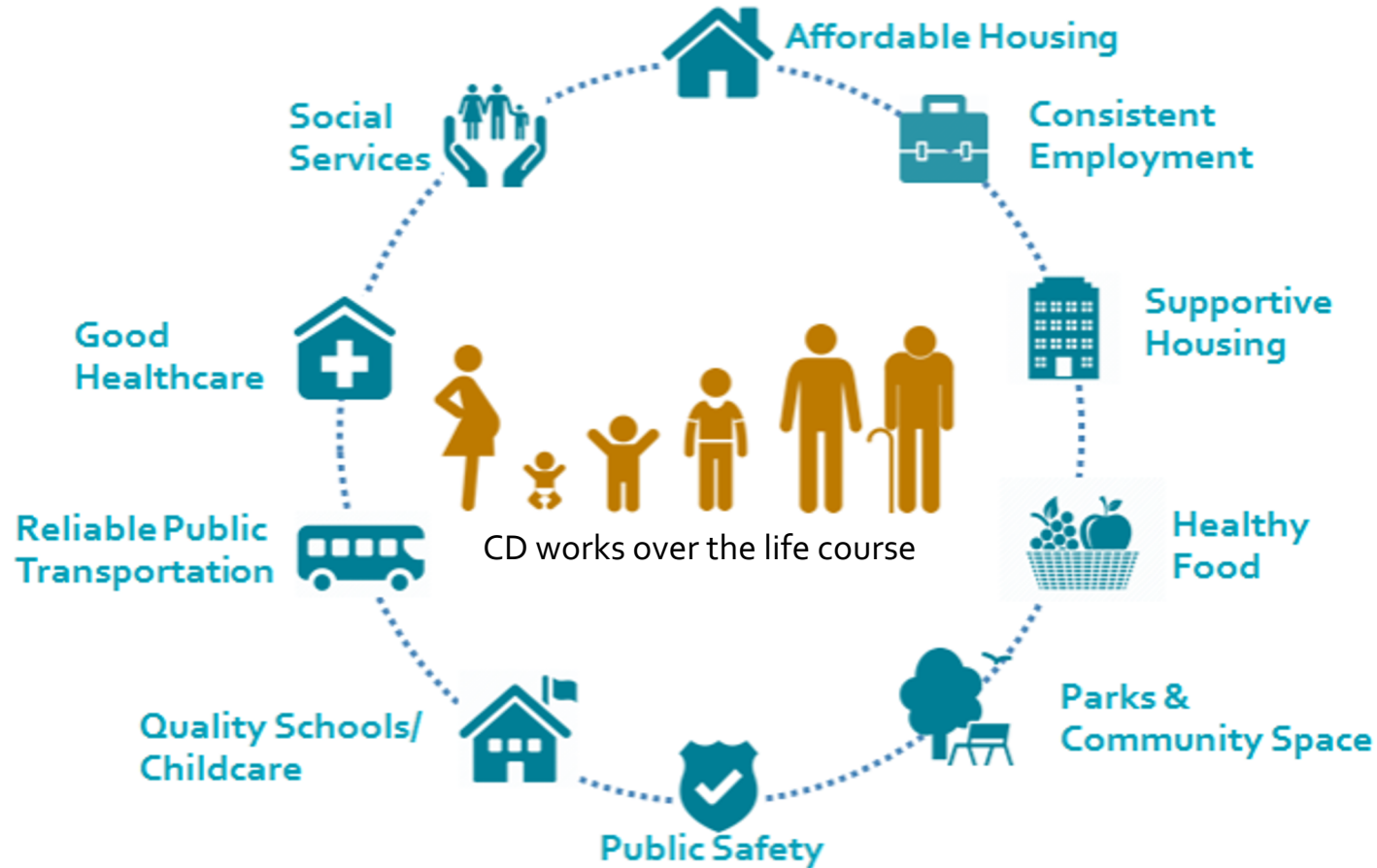
# ZIP CODE IMPROVEMENT... ECONOMIC DEVELOPMENT



**Thunder Valley, CDC Workforce Development,  
Porcupine, SD Sustainable construction**



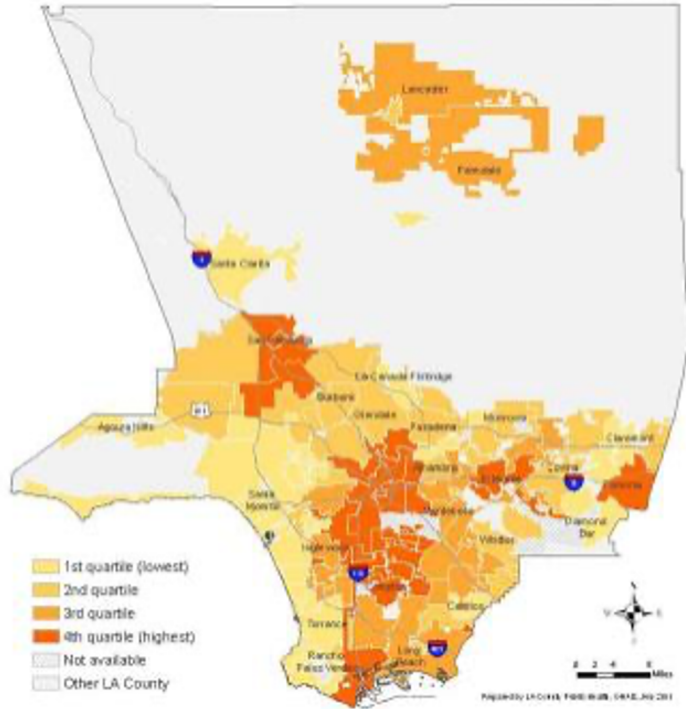
# THE WORK OF COMMUNITY DEVELOPMENT





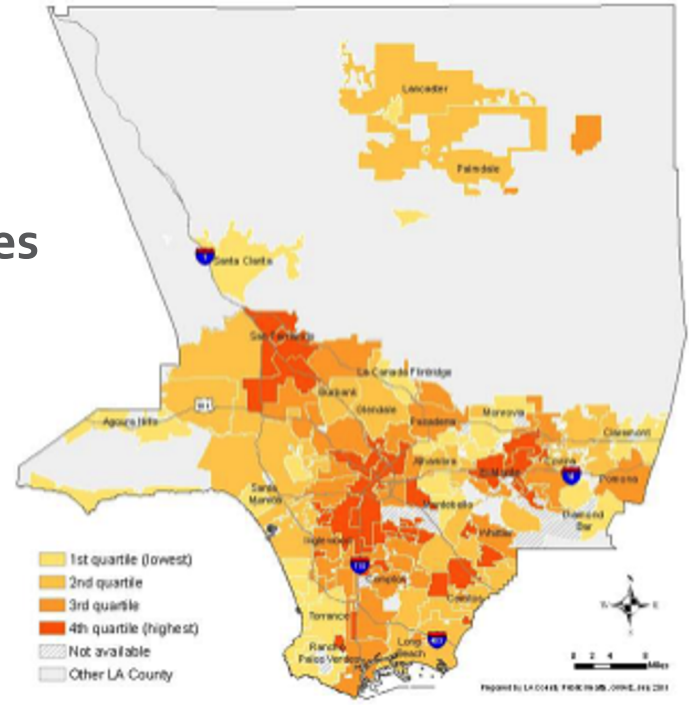
# COMMUNITY DEVELOPMENT & HEALTH WORK SIDE-BY-SIDE

## Economic hardship by city



Los Angeles  
County

## Childhood obesity by city





# Community Development: Scale, Scope, & Major Players



HOW MUCH MONEY? AND WHERE DOES IT COME FROM??

**\$200 BILLION DOLLARS ANNUALLY**

DIRECTED INTO LOW-INCOME NEIGHBORHOODS

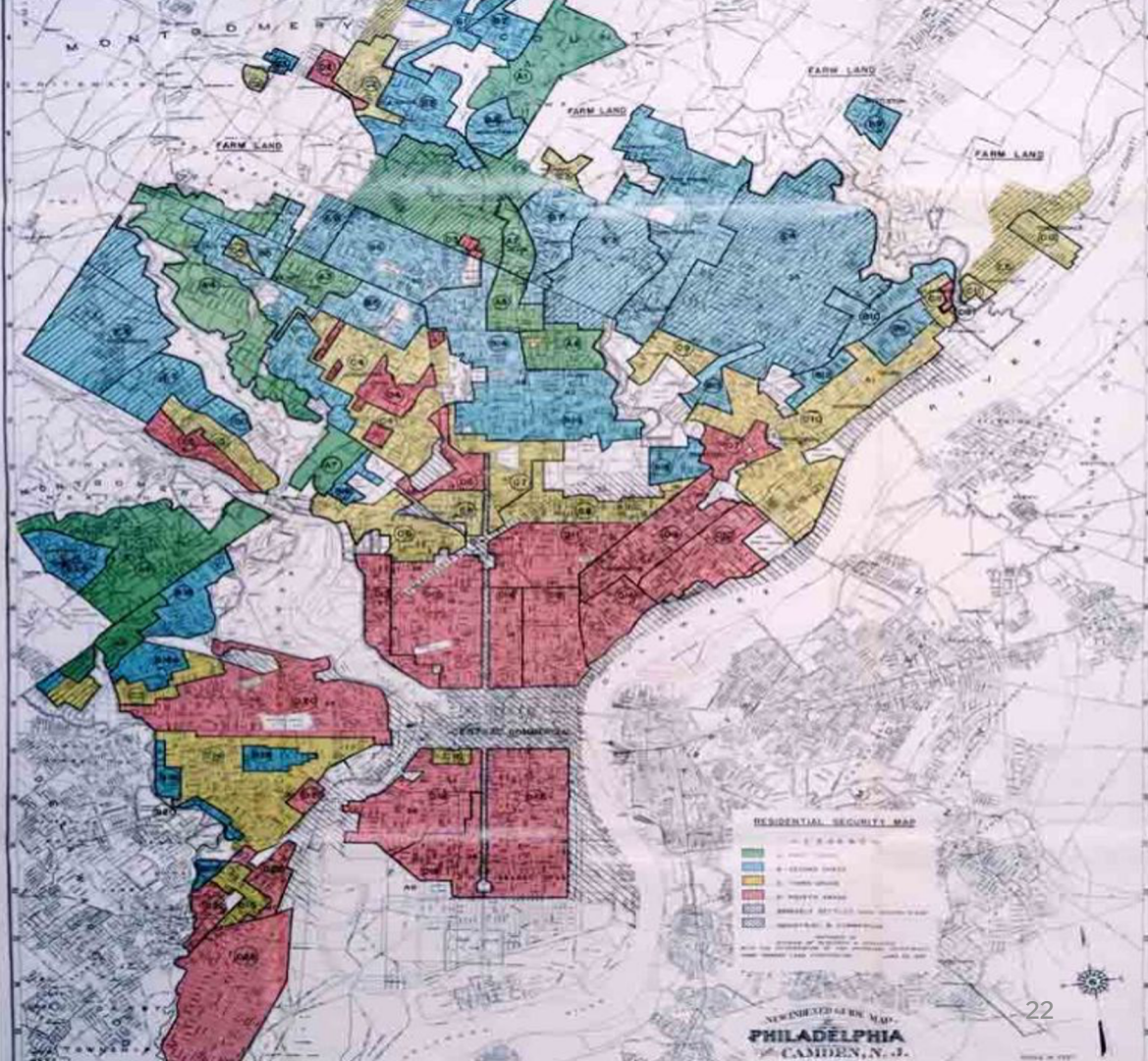
- **Federal/state tax credits & grants**
  - Low Income Housing Tax Credit (LIHTC)
  - New Markets Tax Credit (NMTC)
  - Community Development Block Grants (CDBG)
  - Healthy Food Financing Initiative (HFFI)
- **Community Reinvestment Act dollars**  
CRA-motivated loans and investments from private, for-profit banks



# ANTI-REDLINING LEGISLATION

## Community Reinvestment Act of 1977 (CRA)

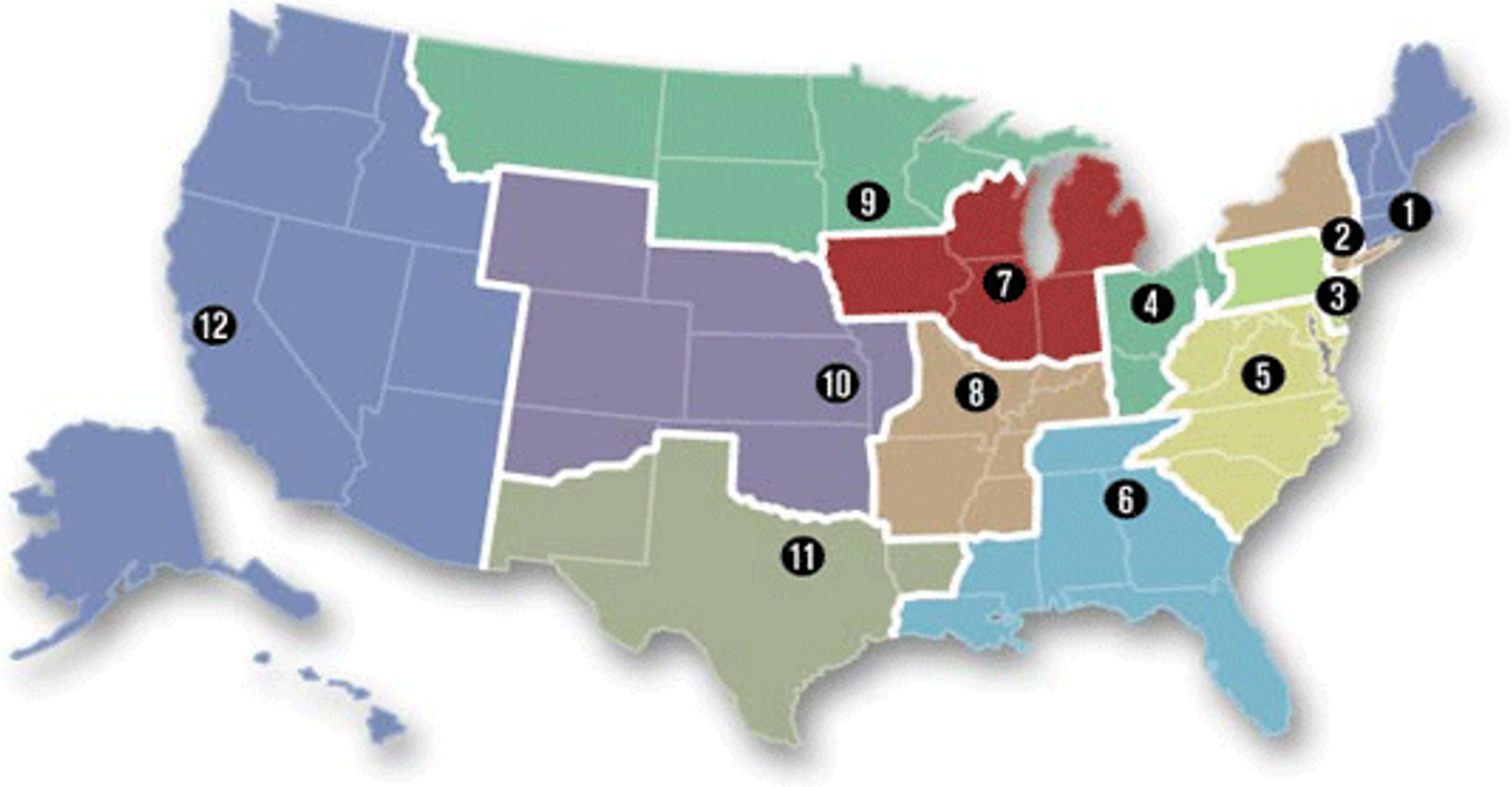
*Philadelphia,  
1949*





# FEDERAL RESERVE SYSTEM

12 REGIONAL BANKS – each with a community development division





# CDFIs

Community Development Financial Institutions

OPPORTUNITY FINANCE NETWORK



Enterprise

RURAL LSC

Hope

Nonprofit Finance Fund



lif capital for healthy families & communities

# CDCs & Housers

Community Development Corporations

NeighborWorks AMERICA

NATIONAL ALLIANCE OF COMMUNITY ECONOMIC DEVELOPMENT ASSOCIATIONS  
naceda  
building prosperous communities together



THE UNITY COUNCIL

hddc  
Historic District Development Corporation

mercy HOUSING

SAHF  
STEWARDS OF AFFORDABLE HOUSING FOR THE FUTURE

HAC

National Church Residences

Visit [BuildHealthyPlaces.org](http://BuildHealthyPlaces.org)'s *Partner Finder* for leading CDFIs and CDCs in your community