

WORKFORCE SOLUTIONS JAM

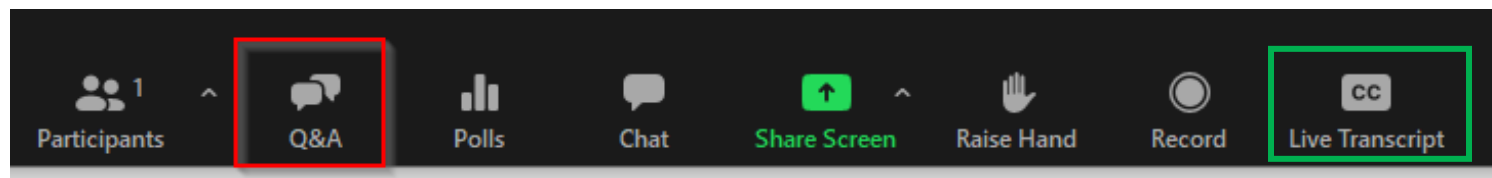
AUGUST 19, 2025

**Provider Voices on AI:
Real-World Insights for the Behavioral Health Workforce**



Housekeeping & Accessibility

- Please introduce yourself in chat: Name, location, organization
- A recording and slides will be emailed to you within 48 hours
- ASL interpretation is being provided at this event - the ASL interpreter will be spotlighted
- **Live captioning** is available – click the "show captions" button to see the transcript
- If you have technical difficulty, please chat "Hosts and Panelists" to try to troubleshoot
- **Q&A** is available – click on the Q&A feature to ask a question or upvote



Chat Code of Conduct

Welcome! This is a respectful, inclusive space for shared learning.

Engagement is encouraged – please share resources and reflections in chat!

Please keep comments:

- **Relevant** to the topic
- **Respectful** of all identities and perspectives
- **Free of hate speech, spam or promotions**

Inappropriate comments will be removed.

Thanks for contributing to a thoughtful discussion!





NATIONAL COUNCIL
for Mental Wellbeing

HMA


 The College for Behavioral
Health Leadership

What is the Workforce Solutions Jam?

A monthly webinar to build national momentum and encourage collaboration through The Workforce Solutions Partnership

- Learn innovative new practices
- Stay informed about ongoing efforts
- Engage with subject matter experts
- Hear about new legislation
- Take action!





today:

Provider Voices on AI

***Real-World Insights for the
Behavioral Health Workforce***



Agenda

Welcome

Topic Introduction

Innovative Insights

Panel and Q&A

Next Steps

Poll – Let's hear from you!

**Where does your organization
currently stand with AI tools in
the workplace?**

Topic Introduction





INNOVATIVE INSIGHTS

Report Spotlight



LEAVITT

PARTNERS

An HMA Company



**Dr. Sarah Hudon
Scholle, DrPH, MPH**

**Principal, Leavitt Partners,
an HMA Company**

Report:
Digital Mental Health
Technologies: Gaps and
Opportunities in Current U.S.
Regulatory Authorities

Leveraging DMHT to Address Access and Workforce Issues in Behavioral Health

Sarah Hudson Scholle

LEAVITT
PARTNERS
An HMA Company



Develop a detailed federal regulatory landscape for digital mental health technology (DMHT), including specific recommendations for action possible under current authorities.

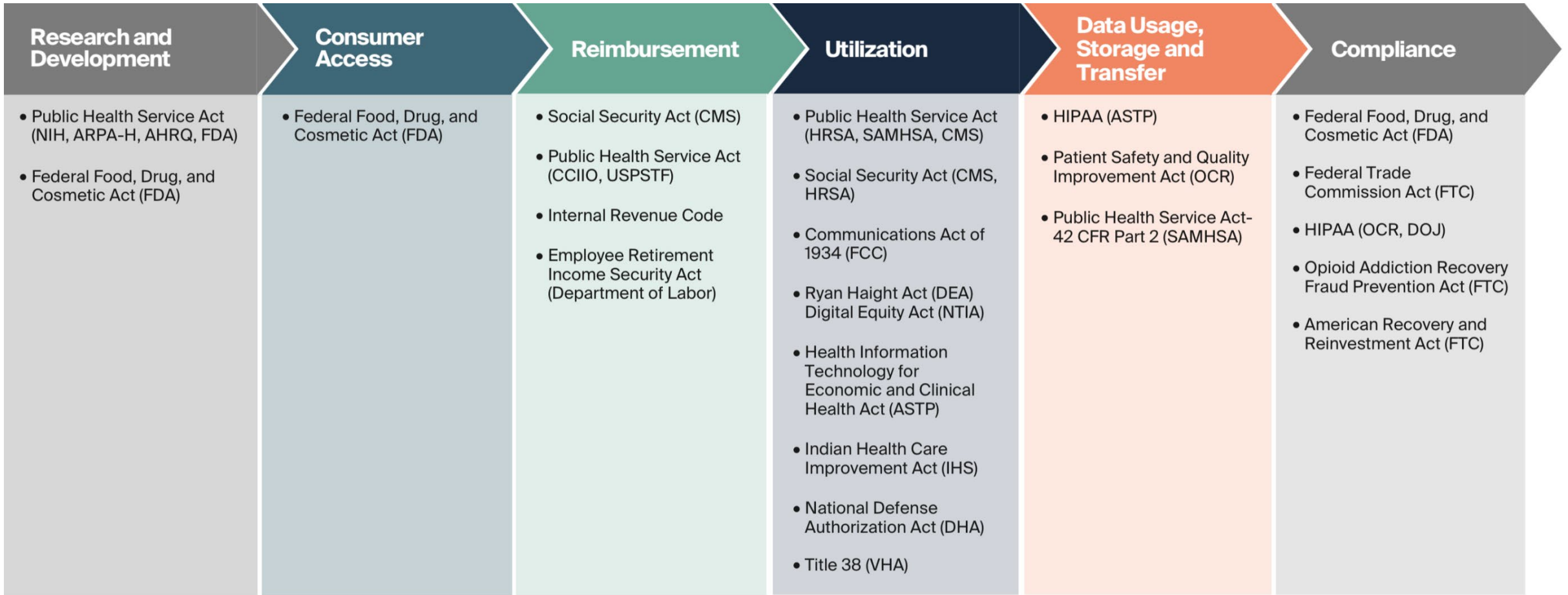
This project was supported by a grant from The Commonwealth Fund

Examples of DMHT



Digital Mental Health Tools			
Category	Type	Definition	MH/SUD Example
Patient-Facing Context: Clinician supported, non-clinician supported, and self-guided	Digital Screening	Digital tools and software that screen for a specific mental health/substance use disorder (MH/SUD) disease or medical condition.	Aiberry
	Digital Diagnostics	Validated digital tools and software that deliver a diagnosis or prognosis of a specific MH/SUD disease or medical condition.	Earlitec
	Care Support	Digital solutions intended to help patients better manage their care of a specific MH/SUD disease or medical condition.	Little Otter
	Digital Therapeutics	Health software intended to treat or alleviate a specific MH/SUD disease or medical condition by generating and delivering a medical intervention.	Daylight (Big Health)
	Patient Monitoring	Digital solutions intended to monitor specific health data, which may be interpreted by physician for clinical management.	Tenovi
	Health and Wellness	Disease-agnostic digital health solutions that primarily capture and store general health data and promote healthy living.	Headspace
Not Patient-Facing	Health System- Clinical	Tools primarily used by physicians and other healthcare professionals to assist in the delivery of clinical care (measurement-based care platforms, decision support, telehealth platforms).	Neuroflow , Ophelia
	Health System- Operational	Tools less likely to be used day-to-day by physicians but are essential for hospitals and health systems to operate efficiently and minimize costs of delivering care (training, supervision).	Lyssn
	Non-Health System	Tools that support non-hospital stakeholders involved in the healthcare ecosystem, such as payers, employers, and industry (referral, navigation).	PsychHub
Other technologies	Artificial intelligence approaches	Software tools that “ analyze and contextualize data to provide information or automatically trigger actions without human interference. ”	

Federal Authorities Throughout the DMHT Life Cycle



Acronyms: Advanced Research Projects Agency for Health (ARPA-H); Agency for Healthcare Research and Quality (AHRQ); Assistant Secretary for Technology Policy/Office of the National Coordinator (ASTP); Centers for Medicare & Medicaid Services (CMS); Consumer Information and Insurance Oversight (CCIIO); Defense Health Agency (DHA); Department of Justice (DOJ); Drug Enforcement Administration (DEA); Federal Communications Commission (FCC); Federal Trade Commission (FTC); Food and Drug Administration (FDA); Health Resources and Services Administration (HRSA); Health Savings Account (HSA); Indian Health Service (IHS); Dept. of Commerce’s National Telecommunications and Information Administration (NTIA); HHS Office for Civil Rights (OCR); Substance Abuse and Mental Health Services Administration (SAMHSA); National Institutes of Health (NIH); Veterans Health Administration; U.S. Preventive Services Task Force (USPSTF).

Key Findings

Regulatory Authorities have limitations and may not be complementary across the U.S. government



Payment and reimbursement issues are central to DMHT development and access, but challenges persist.



Considerations and concerns related to data privacy and security were voices across sectors, especially in the context of growing use of AI.



DMHT has the potential to help reduce health disparities in access to MH/SUD care, though stakeholders noted funding and access to technology as potentially limiting factors.



Recommendations

1

A multi-stakeholder group should lead a consensus-based process to develop a modern regulatory framework to advance access and adoption of DMHT.

2

Public and private payers should provide DMHT vendors with more clarity and guidance on evidence requirements for use and payment to provide more certainty and predictability for vendors while improving consumer access to DMHT.

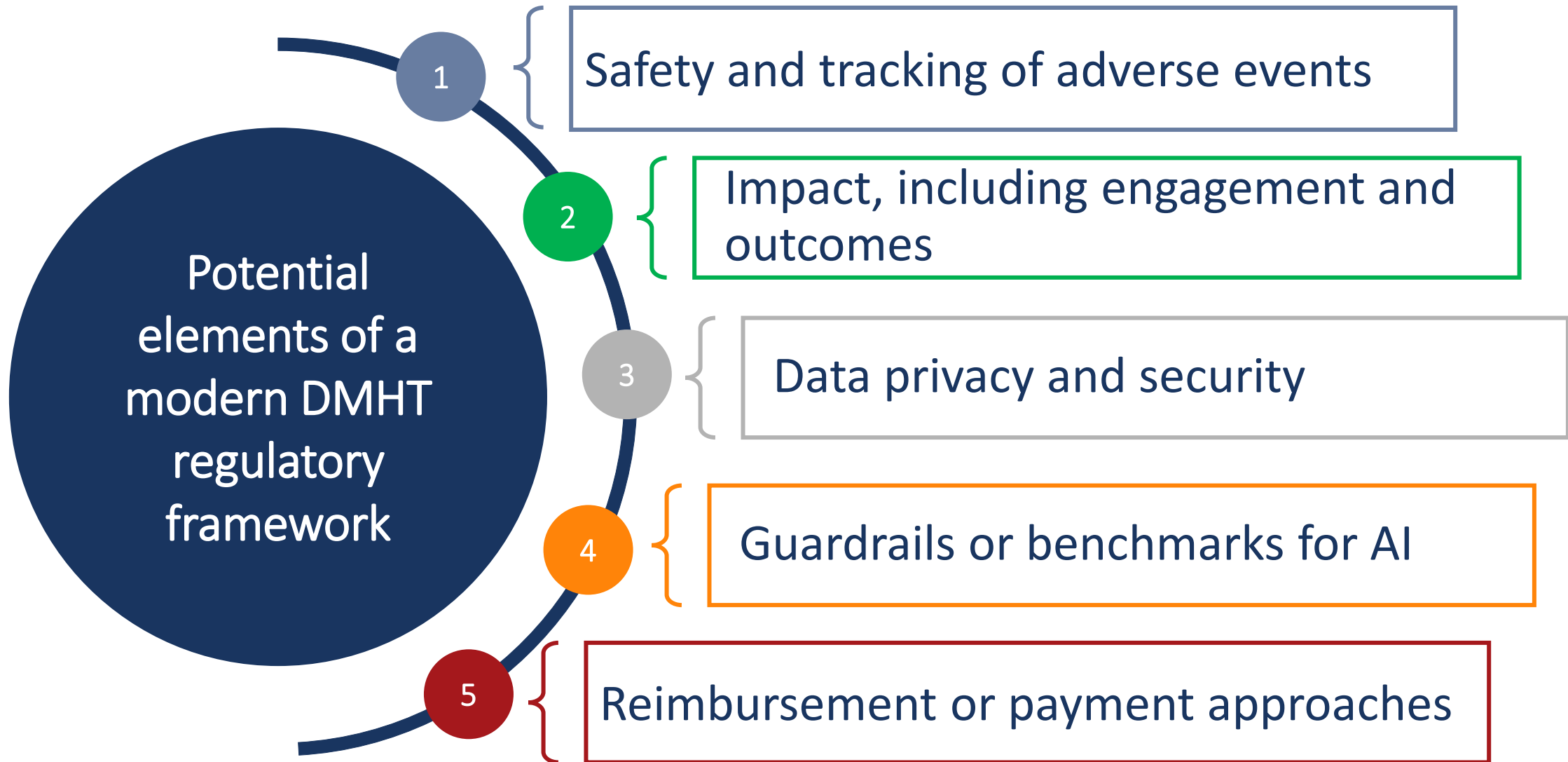
3

The federal government should provide more clarity and awareness regarding data privacy and security requirements. Vendors and others should take steps to improve consumer awareness of data privacy and security requirements.

4

HHS should assess and act on the potential for DMHT to address health disparities.

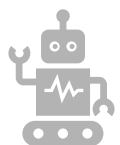
How can a modern regulatory framework advance access to and adoption of DMHT?



Key Themes from Stakeholder Discussion

- DMHT can support the healthcare workforce and more efficient care and important to consider workflow, acceptability
- Payment approaches should consider different types of DMHT.
- Common set of metrics for engagement, outcomes and value is needed.
- More flexible, risk-stratified approaches to regulation are needed.
- Data privacy and security concerns continue; consider set of safety ‘Non-negotiables’

Administration Priorities and DMHT



AI

Focus on deregulation,
economic growth,
national security,
combatting perceived bias



FDA

New position for Head of
IT and AI
AI-assisted review
Focus on MAHA



CMS

2026 Physician Fee
Schedule seeks input on
digital tools and SaaS
Interoperability
framework and patient-
centered data sharing



NIH/CDC/SAMHSA

Lack of clear strategy and
leadership in Behavioral
Health
Funding and staff
reductions



Sarah.Scholle@leavittpartners.com



202-774-1566



601 New Jersey Ave NW,
Washington D.C.



www.leavittpartners.com



Leavitt Partners

Meet Our Panelists



Allie Franklin, MSW LICSW *Moderator

Managing Director, Health Management Associates



Levi Van Dyke

Chief Behavioral Health Officer, Volunteers of America Western Washington

Tool: ReflexAI

Population Served: Crisis Contact Centers



Shalom Lichtenstein, MSN, FNP-BC, PMHNP-BC

Nurse Practitioner at Precious Health

Tool: AvoMD

Population Served: Pediatrics and Family



Judy Tejada CASAC, LMHC

Vice President for Clinical Operations, Horizon Corporations

Tool: Eleos Health and Ambient Listening

Population Served: Inpatient, Residential, Mental Health and Substance Use Services



A red circular arrow graphic that starts at the top, goes down the right side, then up the left side, and back to the top, forming a continuous loop around the text.

TAKEAWAYS & REFLECTION

We want your feedback!



Scan the QR code, or type this link into your browser:

<https://www.surveymonkey.com/r/Aug19JamEval>

Have a suggestion for a future presentation?



Scan the QR code, or type this link into your browser:

<https://www.surveymonkey.com/r/workforcesolutionsjam>

**JOIN US AT THE NEXT
WORKFORCE SOLUTIONS JAM!**

October 21st, 2025

at 10:00am PT / 1:00pm ET

We're pausing for September, but we'll be back with another Jam in October